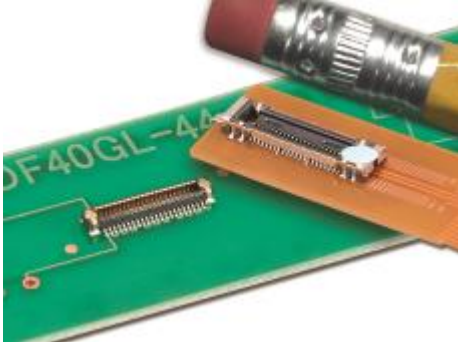




News Release

FOR IMMEDIATE RELEASE
March 23th, 2017



Editor Contact Information
Bill Kysiak, Hirose Electric
630-282-6707
bkysiak@hirose.com

Garth Miller, All Business Marketing
919-424-0090
garth.miller@allbusmarketing.com

Versatile DF40GL Series FPC connector supports transmission speeds up to 10Gbps...

HIROSE DEVELOPS INDUSTRY'S FIRST LOW-PROFILE FPC-TO-BOARD CONNECTOR WITH POSITIVE LOCK

DOWNERS GROVE, ILLINOIS — March 23th, 2017 — Hirose, a leader in the development of innovative connector solutions, has launched a new low-profile flexible printed circuit (FPC) connector that supports FPC applications in a small package, and operates at USB 3.1 gen 2 speeds up to 10Gbps. The DF40GL Series is an excellent choice for daughter boards in USB Type C Applications. Featuring a pitch of only 0.4mm and a height of only 1.5mm, the miniature DF40GL Series is the smallest FPC-to-board connector to feature a positive lock with a blade locking system. A minimized depth of only 3.68mm reduces the required mounting area, which creates additional PCB space for optimizing antenna design and larger batteries.

Offering secure mating and a clear tactile click when mated, the blade lock system has a simple and effective lever that offers quick locking/unlocking. The lock system makes the DF40GL Series FPC-to-board connector impact resistant, and eliminates the need for a “buffer” to increase the retention force. To ensure proper mating, the DF40GL Series has guide ribs for a wide self-alignment range of 0.4mm in XY directions.

A robust shock-absorbing configuration makes the DF40GL Series well suited for a wide range of portable electronics applications including cameras (DSC/DVC), game devices, laptops, tablets, and more. The DF40GL Series is also commonly used in automotive, medical and security applications.

“Developed to support the second generation of high-speed specifications up to 10Gbps, the DF40GL Series flexible printed circuit connector combines a compact, low-profile 1.5mm design with the most rugged and reliable positive lock mechanism in the industry,” said Rick van Weezel, Vice-President of Sales and Marketing for Hirose Electric USA. “In addition to having a low-profile, the DF40GL Series also reduces the required PCB mounting area, saving precious PCB space for design engineers.”

The DF40GL Series FPC-to-board connector offers excellent EMI protection and grounding via metal shielding. The stamped contact design contributes to a long effective mating length of 0.45mm.

The 44-position DF40GL Series has a rating of 0.35A, a rated voltage of 30V AC/DC, and an operating temperature of -55 degree C to 85 degree C.

For additional information about the DF40GL Series connector, visit:

For more information on Hirose visit www.hirose.com/us.

<https://www.hirose.com/product/en/products/DF40GL/>



ABOUT HIROSE ELECTRIC

Hirose Electric Co., Ltd. is a leading global supplier of innovative interconnects, with sales of over \$1 billion to customers worldwide. Hirose employs advanced engineering services, superior customer support and worldwide manufacturing capabilities to provide value-based connector solutions for various

industries including: industrial, telecommunication, consumer electronics, computer and automotive.
More information can be found on Hirose Electric's corporate website at www.hirose.com.